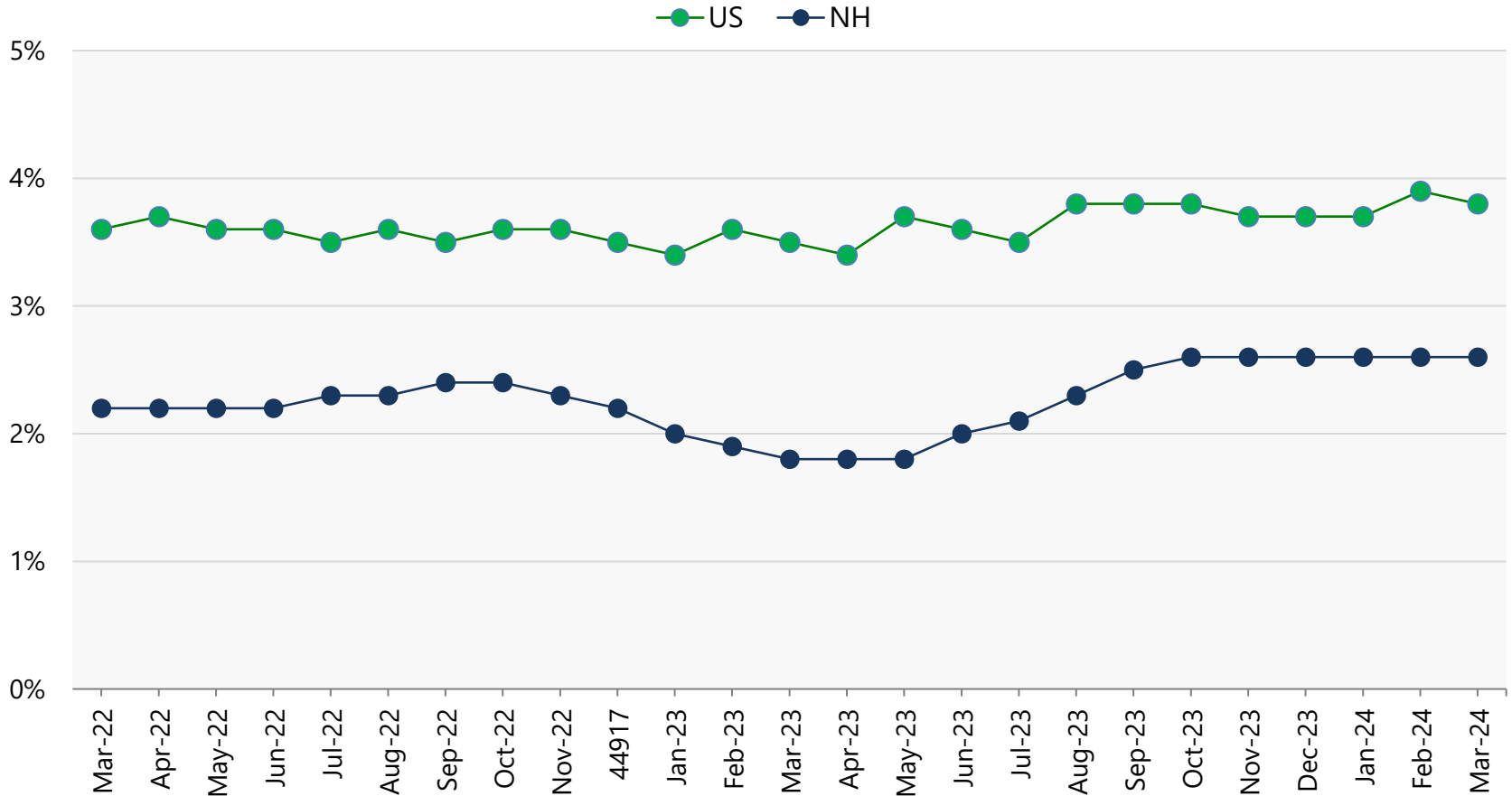


U.S. and New Hampshire Unemployment Rates, Seasonally Adjusted

Preliminary March 2024 Rates: US = 3.8%; NH = 2.6%



Source: Economic & Labor Market Information Bureau, NHES 16-Apr-24

Next Scheduled Update: May 2024

U. S. and New Hampshire Unemployment Rates, Seasonally Adjusted

Preliminary March 2024, Rates: US = 3.8%; NH = 2.6%

| | US | NH |
|--------|------|------|
| Mar-22 | 3.6% | 2.2% |
| Apr-22 | 3.7% | 2.2% |
| May-22 | 3.6% | 2.2% |
| Jun-22 | 3.6% | 2.2% |
| Jul-22 | 3.5% | 2.3% |
| Aug-22 | 3.6% | 2.3% |
| Sep-22 | 3.5% | 2.4% |
| Oct-22 | 3.6% | 2.4% |
| Nov-22 | 3.6% | 2.3% |
| Dec-22 | 3.5% | 2.2% |
| Jan-23 | 3.4% | 2.0% |
| Feb-23 | 3.6% | 1.9% |
| Mar-23 | 3.5% | 1.8% |
| Apr-23 | 3.4% | 1.8% |
| May-23 | 3.7% | 1.8% |
| Jun-23 | 3.6% | 2.0% |
| Jul-23 | 3.5% | 2.1% |
| Aug-23 | 3.8% | 2.3% |
| Sep-23 | 3.8% | 2.5% |
| Oct-23 | 3.8% | 2.6% |
| Nov-23 | 3.7% | 2.6% |
| Dec-23 | 3.7% | 2.6% |
| Jan-24 | 3.7% | 2.6% |
| Feb-24 | 3.9% | 2.6% |
| Mar-24 | 3.8% | 2.6% |

Source: Economic & Labor Market Information Bureau, NHES 16-Mar-24

Next Scheduled Update: May 2024